

CAS BACnet Explorer

Explore and Discover

Automatically discover all the devices, objects, and their properties on your network. The objects and devices are arranged in an easy to use tree format with branches for each network, object, and device.

Easy, fast and useful – There is no better way to test the BACnet interface on a device or system. Install, test and then leave site with confidence and proof that the interface is functional.

Test

The CAS BACnet Explorer allows you to write to the BACnet® points, turn lights on or off, generate alarms, ACK alarms, etc

Monitor

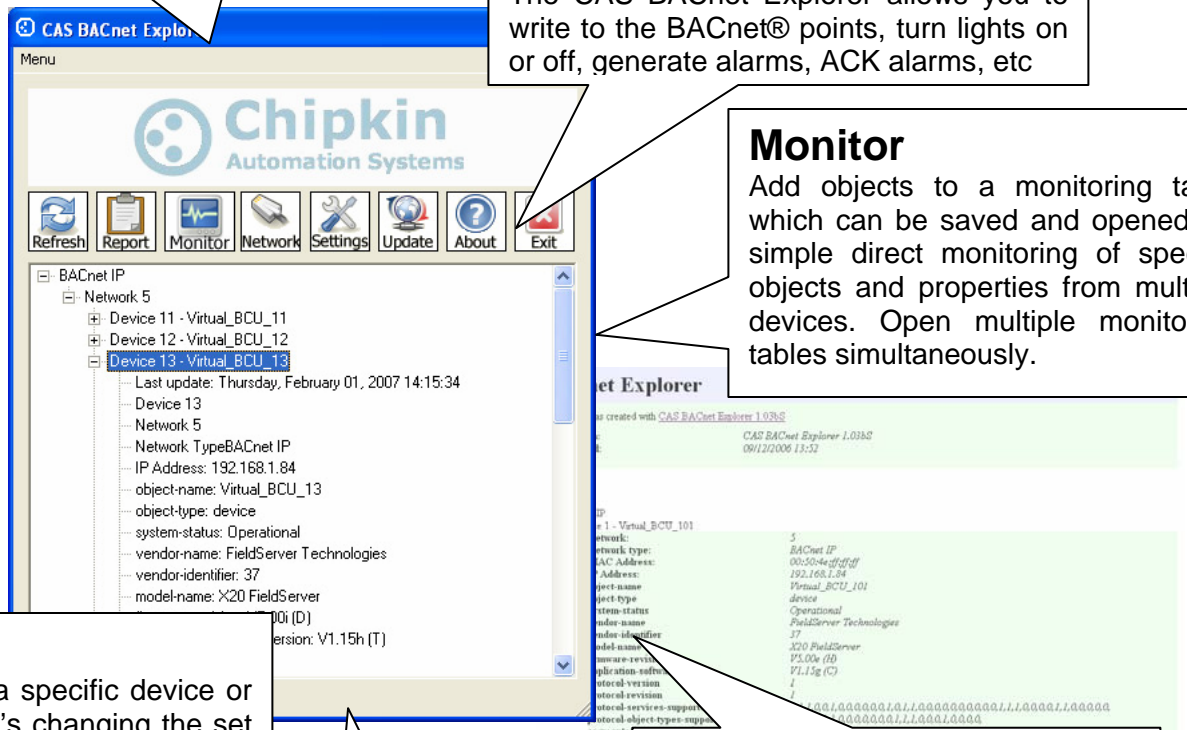
Add objects to a monitoring table which can be saved and opened for simple direct monitoring of specific objects and properties from multiple devices. Open multiple monitoring tables simultaneously.

Police

Monitor traffic to a specific device or object to see who's changing the set point unexpectedly. Records MAC addresses, IP address, messages and other information useful in tracking down unauthorized / unexpected commands.

Free Trial

<http://www.chipkin.com/a/resources/BACnet>



Report / Document

Fantastic reports and multiple report formats – see the level of detail you require. Print them to XML or HTML reports. View them in internet Explorer.

CAS BACnet Explorer - Features

- Supports BACnet®/MSTP, BACnet®/IP and BACnet®/Ethernet 802.3 simultaneously.
- Runs on Windows 2000, XP and Vista.
- Auto / Manual Refresh. Reports the age of last update.
- Multiple Report formats
- Build monitor tables to watch specific points and properties. Save and load the tables.
- No guessing – Lots of informational messages help you understand abnormal conditions.
- Optimize - Configure which properties get read.
- Refresh all, a device or a data object.
- Discover hundreds of devices with thousands of data objects.

CAS BACnet Explorer - Benefits

Ease of Use

Very simple interface requires almost no user interaction. No Training required.
No switching between protocols like some competitors.

Easily prove the device you installed is working



If you install a couple of devices that will form part of a larger system then you know how often the system problems get blamed on your device. 'We can connect to your device'. Use the explorer to prove your device is working when you complete the installation. Print a report and you have your proof.

Don't waste your company's time and money solving system integrator problems. Use the explorer to draw a line in the sand. The explorer is 3rd party software. There is no question of bias.

Equip your Field Service Technicians.

The CAS explorer represents excellent value for money. Its affordable price and company / site licensing discounts allow you to put this effective tool in the hands that need it most.

CAS BACnet Explorer - Connectivity

-  BACnet MSTP - Connect from your PC using a USB-RS485 converter, RS232/485 converter or BACnet Router
-  BACnet IP and Ethernet - Connect from your PC using standard networking devices and cables.

