

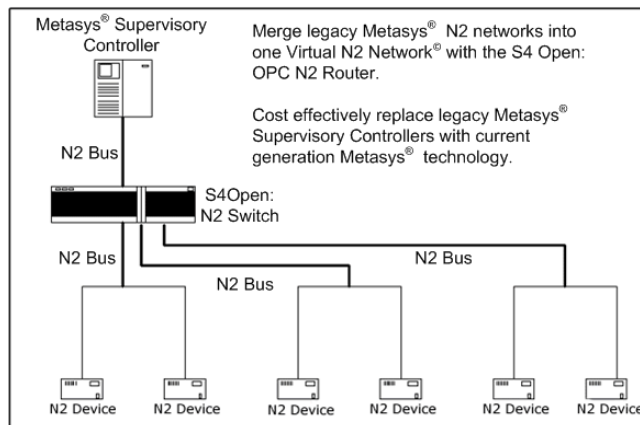


S4 Open: N2 Switch

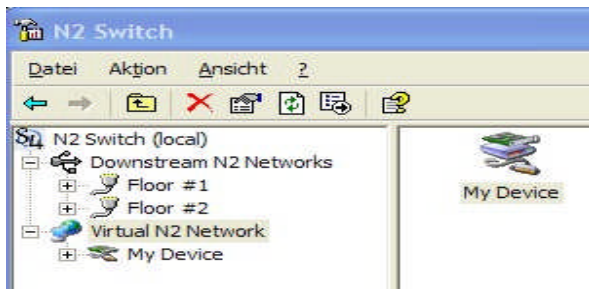
Product Capabilities

The S4 Open: N2 Switch introduces flexibility and cost savings when upgrading legacy Metasys® Building Automation systems to current Metasys® supervisory controller technology. The N2 Switch avoids costly replacement or re-engineering of existing devices on the legacy N2 buses. A typical application would be replacing multiple legacy Companion / Facilitator panels with a single NAE supervisory controller.

This entry level member of the S4 Open family merges multiple legacy Metasys® networks into one current technology Metasys® installation. The name reflects the functionality provided by the appliance- two, or more, legacy Downstream N2 Networks are “switched” onto one upstream



Virtual N2 Network®. The N2 Switch Auto Configure process identifies all devices on



each Downstream N2 Network and publishes the devices, and their associated points, onto the Upstream Virtual N2 Network®. N2 Address translation is applied, wherever necessary, to avoid duplication of N2

addresses from legacy N2 networks. When used in network expansion projects the S4 Open: N2 Switch expands the number of devices and N2 buses that a Johnson Controls, Inc. Metasys® supervisory controller can support and allows extension of the N2 bus to remote buildings over existing network infrastructure.



S4 Open: N2 Switch

Product Capabilities

The S4 Open: N2 Switch allows the Building Automation System Designer to take advantage of all the features and strengths of any model of the Johnson Controls, Inc. supervisory controller. In normal operation the N2 Switch is completely transparent to the supervisory controller. What the supervisory controller sees on its N2 interface is the switched image of the sum of the N2 devices on all of the Downstream N2 Networks. It has no need to know what ports they were connected to, what media or transport was utilized, or if address translation was performed. As far as it is concerned our Virtual N2 Network[®] is a normal, traditional, N2 field bus.

Key S4 Open: N2 Switch Features:

- Delivered as a turnkey network appliance, hosted on an Industrial PC
- Expands the number of devices and N2 buses that a Metasys[®] supervisory controller can support
- Combine multiple N2 buses in a large complex building into one virtual N2 bus.
- Standard vendor tools are used to configure N2 devices on each N2 bus.
- All standard Metasys[®] N2 devices are supported including N2 Open, System-91, VMA, and 3rd party Metasys[®] Compatible devices.
- Automatically discovers and identifies devices on the N2 bus.
- Automatically provides N2 address translation and mapping.
- N2 bus is extended via Ethernet - TCP/IP to remote locations
- Upgrade existing Metasys[®] infrastructure at a low cost
- The number of N2 devices and points supported is limited only by the N2 protocol standard and the capabilities of the selected Metasys[®] supervisory controller.
- Easily upgradeable via protocol and functionality plug-ins for expanded functionality

The S4 Group's S4 Open line of Metasys[®] compatible products extend and enhance the capabilities and useful life of existing Metasys[®] installations. Contact The S4 Group, one of our channel partners, or visit us at www.TheS4Group.com for more information.



the United States and/or other countries

The S4 Group is a member of the Microsoft Windows Embedded Partners Program. All S4 Open appliances are powered by the Windows Embedded Operating System. Microsoft, Windows, and the Windows CE are registered trademarks of Microsoft Corporation in

The S4 Group, Inc. 585 – 24th. Street, Ste 106
Office: (801) 621 1970 sejones@thes4group.com
Mobile: (414) 828 0166

Ogden, UT 84401 USA
<http://www.thes4group.com>

revised 04/10/08